

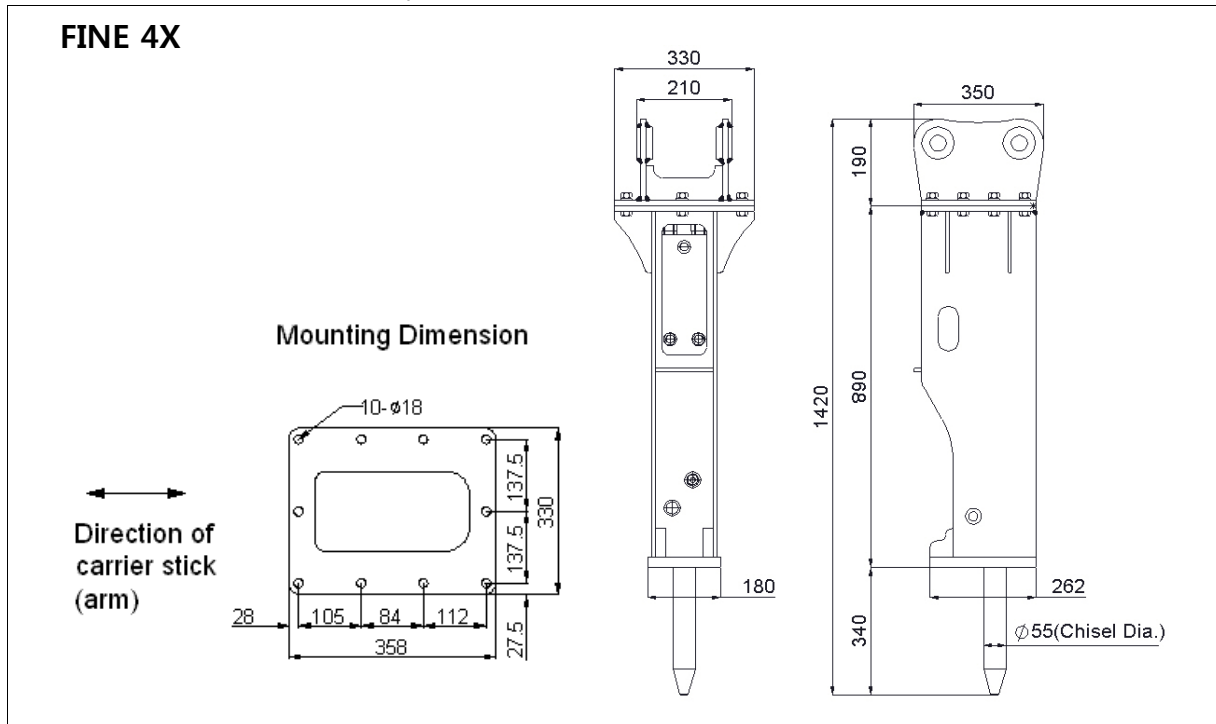
FINE 4X **TECHNICAL SPECIFICATIONS**

FS#	FHB-T4-E1
Cre. Date	28 APR, 2011
Rev. Date	
Page	1 of 4

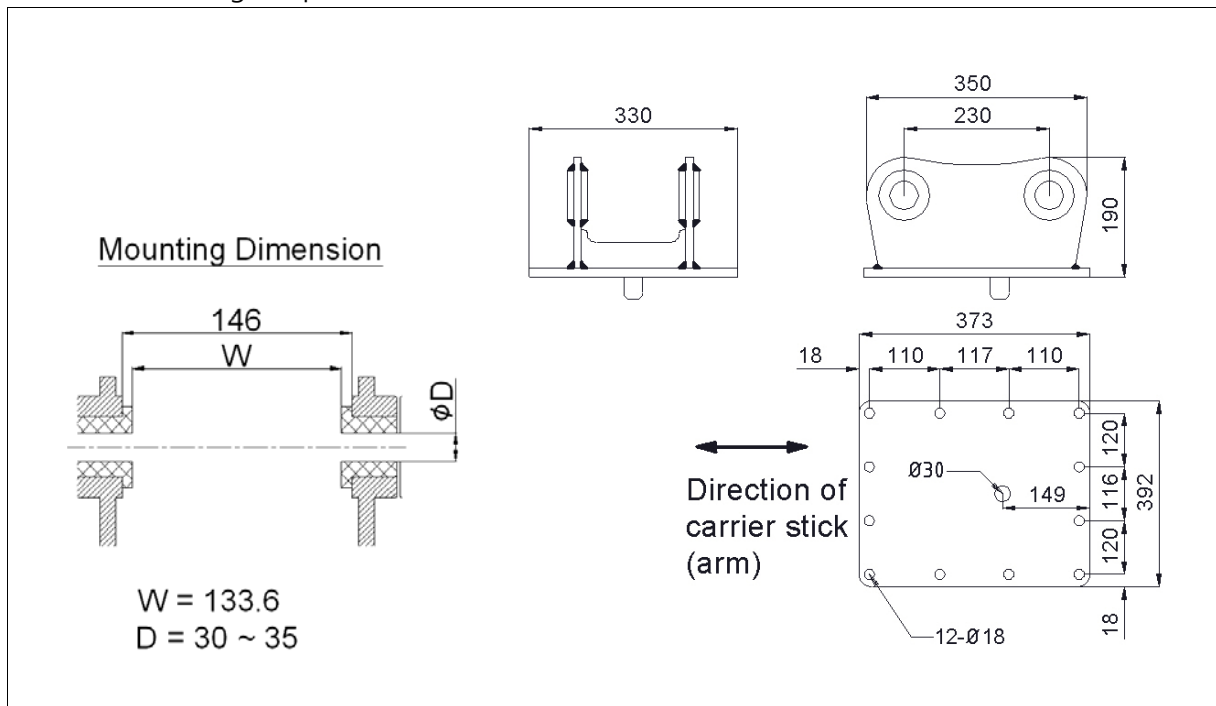
1. EXTERNAL DIMENSIONS

Unit: mm

● **X (Box) : Silenced Version - Adapter Mount**



● **Standard Mounting Adapter for X version**





FINE 4X TECHNICAL SPECIFICATIONS

FS#	FHB-T4-E1
Cre. Date	28 APR, 2011
Rev. Date	
Page	2 of 4

2. BASIC SPECIFICATIONS

Bracket Version	X (Box)			
Available Option				
2-speed control	Std.			
Dust protector	Opt.			
Auto-greasing kit	Opt.			
Working Weight ¹⁾	175 (386)		kg (lbs)	
Weight without chisel and mounting adapter			kg (lbs)	
Overall Length ²⁾	1,420 (55)		mm (in.)	
Weight of components				
Power-cell			kg	(lbs)
Chisel(standard)	9	(20)	kg	(lbs)
Mounting adapter ³⁾			kg	(lbs)
Required Oil Flow	20 ~ 50	(5 ~ 13)	lpm	(gpm)
Operating Pressure	90 ~ 120	(1,305 ~ 1,740)	bar	(psi)
Blow Frequency	550 ~ 1200		bpm	
Impact Energy	480	(354)	J	(ft.lbf)
Tool (chisel) Shank Diameter	53	(2.1)	mm	(in.)
Applicable Carrier Weight				
Optimal range	1 ~ 3.5	(2 ~ 8)	t	(klbs)
Available range	1 ~ 3.5	(2 ~ 8)	t	(klbs)

Notes :

- 1) Total weight including standard tool, standard mounting adapter and spacers but excluding hydraulic hoses, fittings and mounting pins.
- 2) The length measured from the tool tip of the standard tool to the top of the breaker including mounting adapter.
- 3) Including standard mounting adapter, fasteners and spacers (for X version)



FINE 4X **TECHNICAL SPECIFICATIONS**

FS#	FHB-T4-E1
Cre. Date	28 APR, 2011
Rev. Date	
Page	3 of 4

3. INSTALLATION SPECIFICATIONS

Gas Charging Pressure ¹⁾				
Back-head (Piston accumulator) ²⁾	16 ~ 17	(232 ~ 247)	bar	(psi)
Hydraulic Piping				
Line size (min. internal diameter)	13	(1/2)	mm	(in.)
Acceptable back pressure (max.) ³⁾	10	(150)	bar	(psi)
Hose connections of breaker				
Oil supply (IN) & return (OUT)	BSP 1/2" O-Ring Boss Female			
Pressure Relief (min.)	40 (600) + measured max. operating pressure			
Acceptable Hydraulic Oil				
Operating temperature ⁴⁾	-20 ~ +85	(-4 ~ +185)	°C	(°F)
Viscosity	1000 ~ 10		cSt	

Notes :









- 1) The prefill nitrogen gas pressure measured statically (breaker not operating) without down load on the tool at the stabilized gas temperature of +20 °C
- 2) The recommended value at the normal operating condition (supplied oil flow, oil temperature and viscosity, etc.)
- 3) The maximum allowed oil pressure at the breaker's connection point to the return line (measured statically without the breaker)
- 4) The allowed temperature limits when using the oil of viscosity grade 46



FINE 4X TECHNICAL SPECIFICATIONS

FS#	FHB-T4-E1
Cre. Date	28 APR, 2011
Rev. Date	
Page	4 of 4

4. AVAILABLE TOOLS (CHISELS)

Shank Diameter	53 (2.1) mm (in.)			
TYPE OF TOOL :				
	Wedge Point	Moil Point	In Line Point	Blunt Point
Tool Diameter ¹⁾	53 (2.1)	53 (2.1)	53 (2.1)	53 (2.1) mm (in.)
Tool Length	580 (23)	580 (23)	580 (23)	580 (23) mm (in.)
Tool Weight	9.17 (20.2)	9.06 (20)	9.17 (20.2)	9.53 (21) kg (lbs)
Tool Shape				
				

Notes :

1) The diameter of the tool portion outside the breaker body

- Other special designs are also available on request.