



FINE 65X

TECHNICAL SPECIFICATIONS

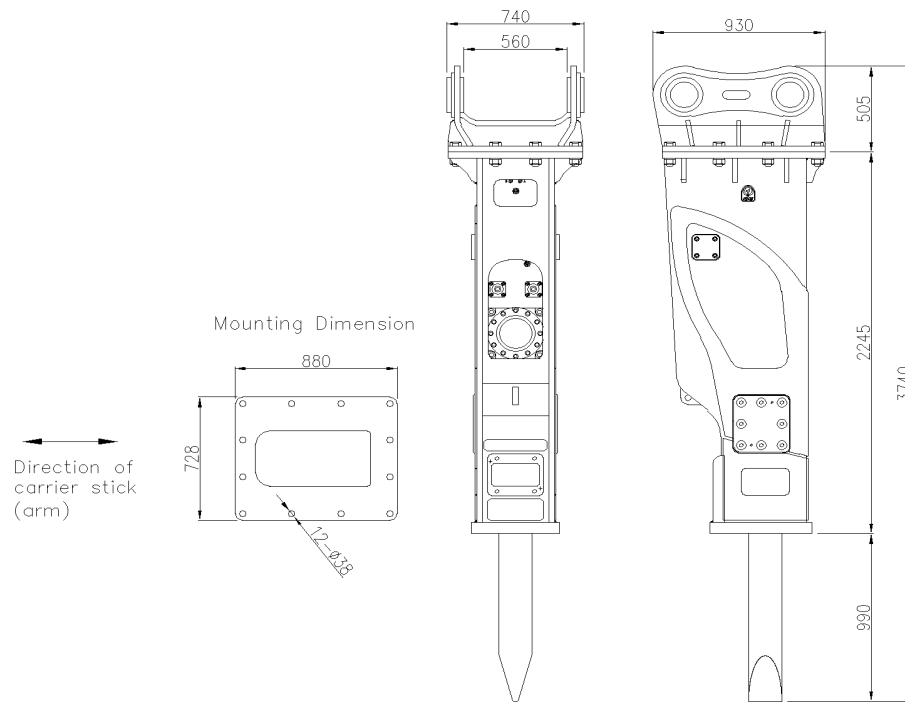
FS#	FHB-T65-E1
Cre. Date	19 OCT, 2016
Rev. Date	
Page	1 of 4

1. EXTERNAL DIMENSIONS

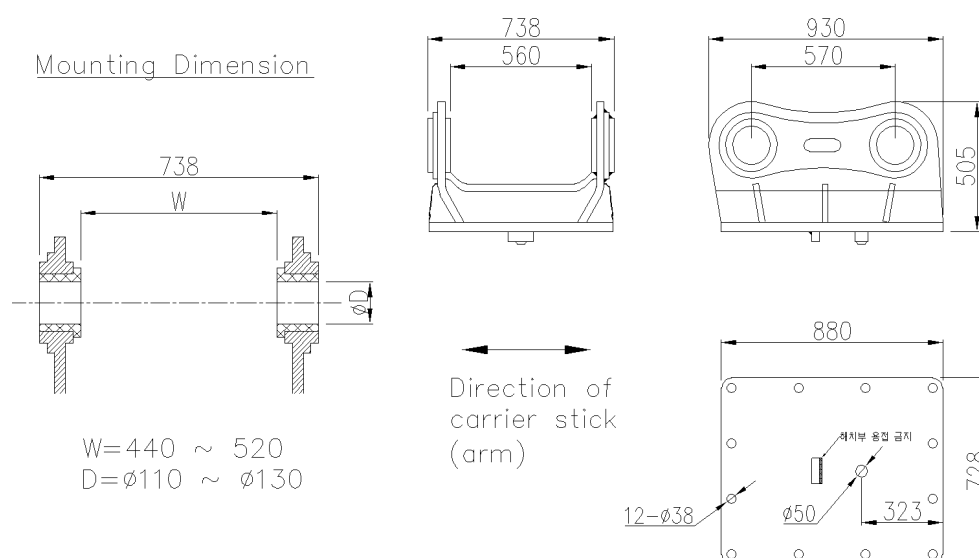
Unit: mm

● X (Box) : Silenced Version - Adapter Mount

FINE 65X



● Standard Mounting Adapter for X version





FINE 65X TECHNICAL SPECIFICATIONS

FS#	FHB-T65-E1
Cre. Date	19 OCT, 2016
Rev. Date	
Page	2 of 4

2. BASIC SPECIFICATIONS

Bracket Version	X (Box)			
Available Option				
2-speed control	Std.			
Dust protector	Opt.			
Auto-greasing kit	Opt.			
Working Weight ¹⁾	3,790 (8,355)		kg (lbs)	
Weight without mounting adapter	3,294 (7,262)		kg (lbs)	
Overall Length ²⁾	3,740 (147)		mm (in.)	
Weight of components				
Power-cell	1,874	(4,131)	kg	(lbs)
Chisel(standard)	320	(705)	kg	(lbs)
Required Oil Flow	250 ~ 320	(66 ~ 85)	lpm	(gpm)
Operating Pressure	150 ~ 180	(2,175 ~ 2,610)	bar	(psi)
Blow Frequency	200 ~ 400		bpm	
Impact Energy	13,630	(10,053)	J	(ft.lbf)
Tool (chisel) Shank Diameter	180	(7.086)	mm	(in.)
Applicable Carrier Weight				
Optimal range	50 ~ 65	(110 ~ 143)	t	(klbs)
Available range	50 ~ 65	(110 ~ 143)	t	(klbs)

Notes :

- 1) Total weight including standard tool, standard mounting adapter and spacers but excluding hydraulic hoses, fittings and mounting pins.
- 2) The length measured from the tool tip of the standard tool to the top of the breaker including mounting adapter.
- 3) Including standard mounting adapter, fasteners and spacers (for X version)



FINE 65X **TECHNICAL SPECIFICATIONS**

FS#	FHB-T65-E1
Cre. Date	19 OCT, 2016
Rev. Date	
Page	3 of 4

3. INSTALLATION SPECIFICATIONS

Gas Charging Pressure ¹⁾				
Back-head (Piston accumulator) ²⁾	17 ~ 19	(246 ~ 275)	bar	(psi)
High pressure accumulator	60	(870)	bar	(psi)
Pressure Adjust Valve Setting ³⁾ (number of turns open from the full-close)				
	2.0 ~ 3.0		turns	
Hydraulic Piping				
Line size (min. internal diameter)	32	(1 1/4)	mm	(in.)
Acceptable back pressure (max.) ⁴⁾	10	(150)	bar	(psi)
Hose connections of breaker				
Oil supply (IN) & return (OUT)	BSP 1 1/4" O-Ring Boss Female			
Pressure Relief (min.)				
	40 (600) + measured max. operating pressure			
Acceptable Hydraulic Oil				
Operating temperature ⁵⁾	-20 ~ +85	(-4 ~ +185)	°C	(°F)
Viscosity	1000 ~ 10		cSt	

Notes :






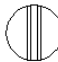


- 1) The prefill nitrogen gas pressure measured statically (breaker not operating) without down load on the tool at the stabilized gas temperature of +20 °C
- 2) The recommended value at the normal operating condition (supplied oil flow, oil temperature and viscosity, etc.)
- 3) The value which is set at the factory to obtain the nominal operating pressure at the middle value of oil flow and back-head gas pressure.
- 4) The maximum allowed oil pressure at the breaker's connection point to the return line (measured statically without the breaker)
- 5) The allowed temperature limits when using the oil of viscosity grade 46



FINE 65X **TECHNICAL SPECIFICATIONS**

FS#	FHB-T65-E1
Cre. Date	19 OCT, 2016
Rev. Date	
Page	4 of 4

4. AVAILABLE TOOLS (CHISELS)

Shank Diameter	180	(7.08)			mm	(in.)
TYPE OF TOOL :						
	Wedge Point	Moil Point	In Line Point	Blunt Point		
Tool Diameter ¹⁾	180 (7.08)	180 (7.08)	180 (7.08)	180 (7.08)	mm	(in.)
Tool Length	1700 (66.9)	1700 (66.9)	1700 (66.9)	1700 (66.9)	mm	(in.)
Tool Weight	320(705)	308(679)	320(705)	341 (752)	kg	(lbs)
Tool Shape	 	 	 	 		

Notes :

1) The diameter of the tool portion outside the breaker body

- Other special designs are also available on request.