



FINE 45X

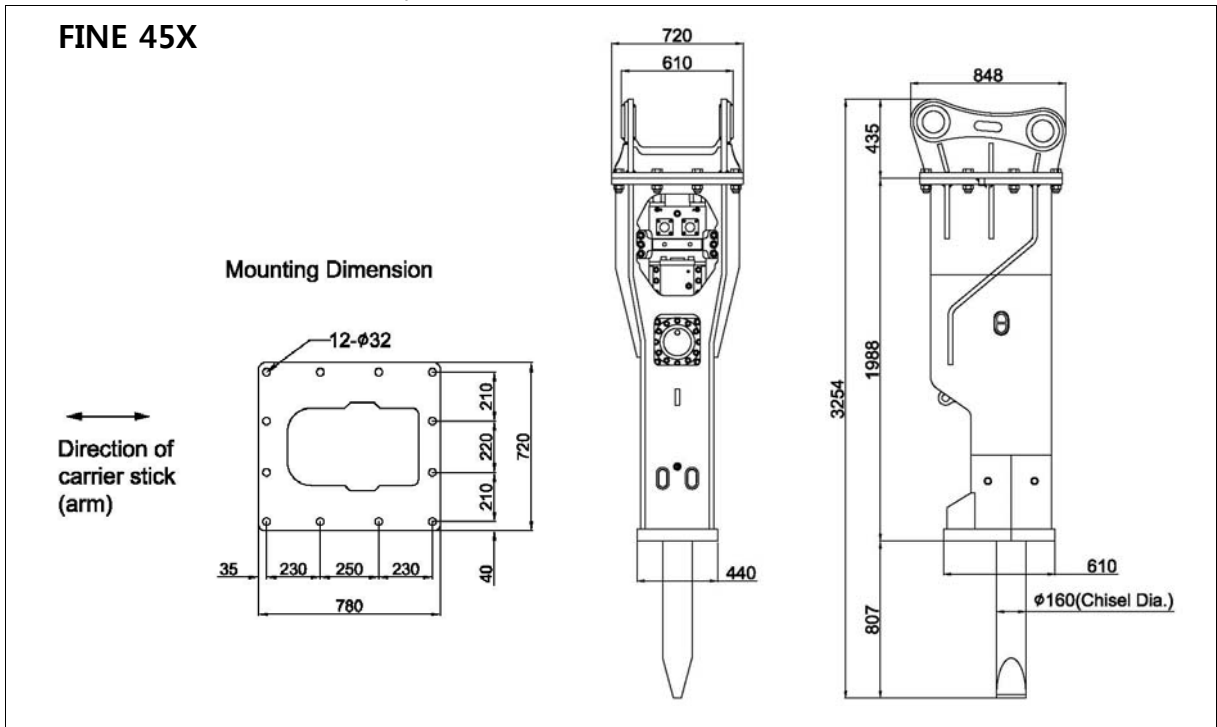
TECHNICAL SPECIFICATIONS

| | |
|-----------|--------------|
| FS# | FHB-T45-E1 |
| Cre. Date | 28 APR, 2011 |
| Rev. Date | |
| Page | 1 of 4 |

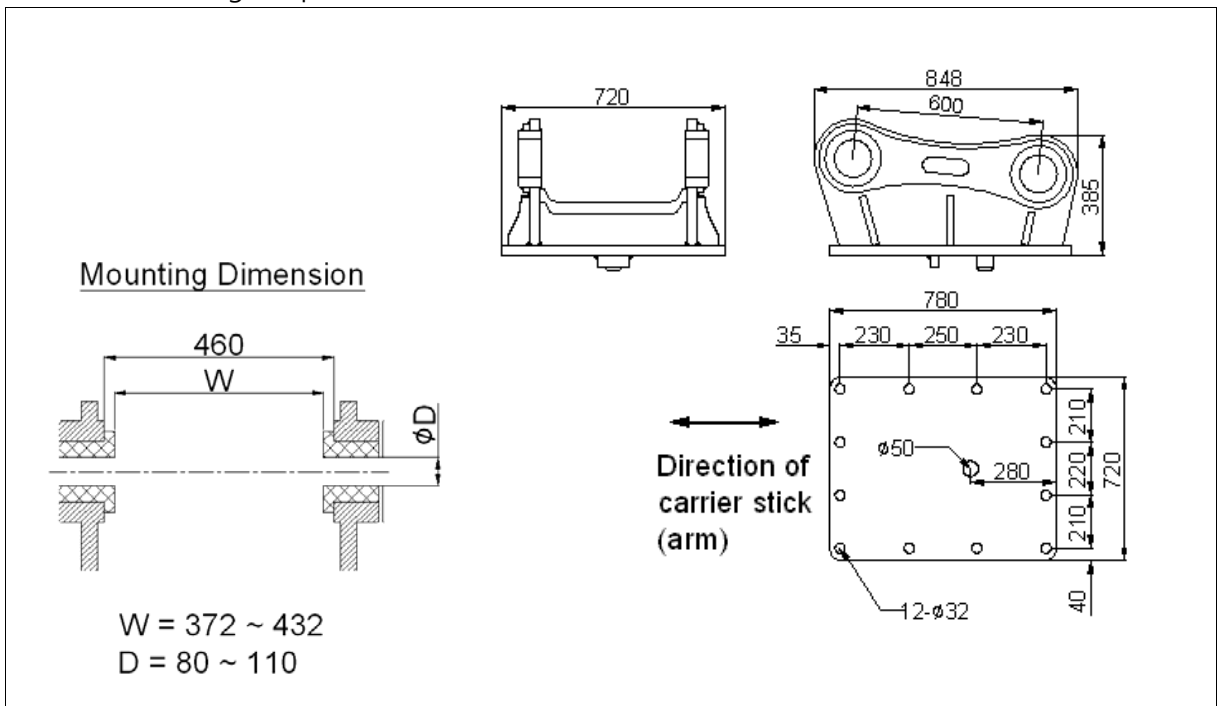
1. EXTERNAL DIMENSIONS

Unit: mm

- X (Box) : Silenced Version - Adapter Mount



- Standard Mounting Adapter for X version





FINE 45X
TECHNICAL SPECIFICATIONS

| | |
|-----------|--------------|
| FS# | FHB-T45-E1 |
| Cre. Date | 28 APR, 2011 |
| Rev. Date | |
| Page | 2 of 4 |

2. BASIC SPECIFICATIONS

| Bracket Version | X (Box) | | |
|--|------------------|-----------------|-------------|
| Available Option | | | |
| 2-speed control | Std. | | |
| Dust protector | Opt. | | |
| Auto-greasing kit | Opt. | | |
| Working Weight ¹⁾ | 3,280 (7,231) | | kg (lbs) |
| Weight without chisel and mounting adapter | 2,705 (5,964) | | kg (lbs) |
| Overall Length ²⁾ | 3,258 (127) | | mm (in.) |
| Weight of components | | | |
| Power-cell | 1,414 | (3,117) | kg (lbs) |
| Chisel(standard) | 219 | (483) | kg (lbs) |
| Mounting adapter ³⁾ | 356 | (785) | kg (lbs) |
| Required Oil Flow | 190 ~ 250 | (50 ~ 66) | lpm (gpm) |
| Operating Pressure | 160 ~ 200 | (2,320 ~ 2,900) | bar (psi) |
| Blow Frequency | 300 ~ 600 | | bpm |
| Impact Energy | 9,970 | (7,358) | J (ft.lbf) |
| Tool (chisel) Shank Diameter | 160 | (6.2) | mm (in.) |
| Applicable Carrier Weight | | | |
| Optimal range | 40 ~ 49 | (88 ~ 108) | t (klbs) |
| Available range | 40 ~ 49 | (88 ~ 108) | t (klbs) |

Notes :

- 1) Total weight including standard tool, standard mounting adapter and spacers but excluding hydraulic hoses, fittings and mounting pins.
- 2) The length measured from the tool tip of the standard tool to the top of the breaker including mounting adapter.
- 3) Including standard mounting adapter, fasteners and spacers (for X version)



FINE 45X
TECHNICAL SPECIFICATIONS

| | |
|-----------|--------------|
| FS# | FHB-T45-E1 |
| Cre. Date | 28 APR, 2011 |
| Rev. Date | |
| Page | 3 of 4 |

3. INSTALLATION SPECIFICATIONS

| | | | | |
|---|---|-------------|-------|-------|
| Gas Charging Pressure ¹⁾ | | | | |
| Back-head (Piston accumulator) ²⁾ | 9 ~ 10 | (131 ~ 145) | bar | (psi) |
| High pressure accumulator | 60 | (870) | bar | (psi) |
| Pressure Adjust Valve Setting ³⁾ (number of turns open from the full-close) | 2.5 ~ 3.0 | | turns | |
| Hydraulic Piping | | | | |
| Line size (min. internal diameter) | 32 | (1 1/4) | mm | (in.) |
| Acceptable back pressure (max.) ⁴⁾ | 10 | (150) | bar | (psi) |
| Hose connections of breaker | | | | |
| Oil supply (IN) & return (OUT) | BSP 1 1/4" O-Ring Boss Female | | | |
| Pressure Relief (min.) | 40 (600) + measured max. operating pressure | | | |
| Acceptable Hydraulic Oil | | | | |
| Operating temperature ⁵⁾ | -20 ~ +85 | (-4 ~ +185) | °C | (°F) |
| Viscosity | 1000 ~ 10 | | cSt | |

Notes :





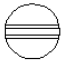
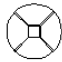
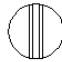
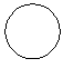
- 1) The prefill nitrogen gas pressure measured statically (breaker not operating) without down load on the tool at the stabilized gas temperature of +20 °C
- 2) The recommended value at the normal operating condition (supplied oil flow, oil temperature and viscosity, etc.)
- 3) The value which is set at the factory to obtain the nominal operating pressure at the middle value of oil flow and back-head gas pressure.
- 4) The maximum allowed oil pressure at the breaker's connection point to the return line (measured statically without the breaker)
- 5) The allowed temperature limits when using the oil of viscosity grade 46



FINE 45X
TECHNICAL SPECIFICATIONS

| | |
|-----------|--------------|
| FS# | FHB-T45-E1 |
| Cre. Date | 28 APR, 2011 |
| Rev. Date | |
| Page | 4 of 4 |

4. AVAILABLE TOOLS (CHISELS)

| | | | | | |
|-----------------------------|---|---|---|---|----------|
| Shank Diameter | 160 | (6.3) | | | mm (in.) |
| | TYPE OF TOOL : | | | | |
| | Wedge Point | Moil Point | In Line Point | Blunt Point | |
| Tool Diameter ¹⁾ | 160 (6.3) | 160 (6.3) | 160 (6.3) | 160 (6.3) | mm (in.) |
| Tool Length | 1500 (59) | 1500 (59) | 1500 (59) | 1500 (59) | mm (in.) |
| Tool Weight | 218.7(482.2) | 212(467.4) | 218.7(482.2) | 229.3(505.5) | kg (lbs) |
| Tool Shape |  |  |  |  | |
| |  |  |  |  | |

Notes :

- 1) The diameter of the tool portion outside the breaker body
- Other special designs are also available on request.